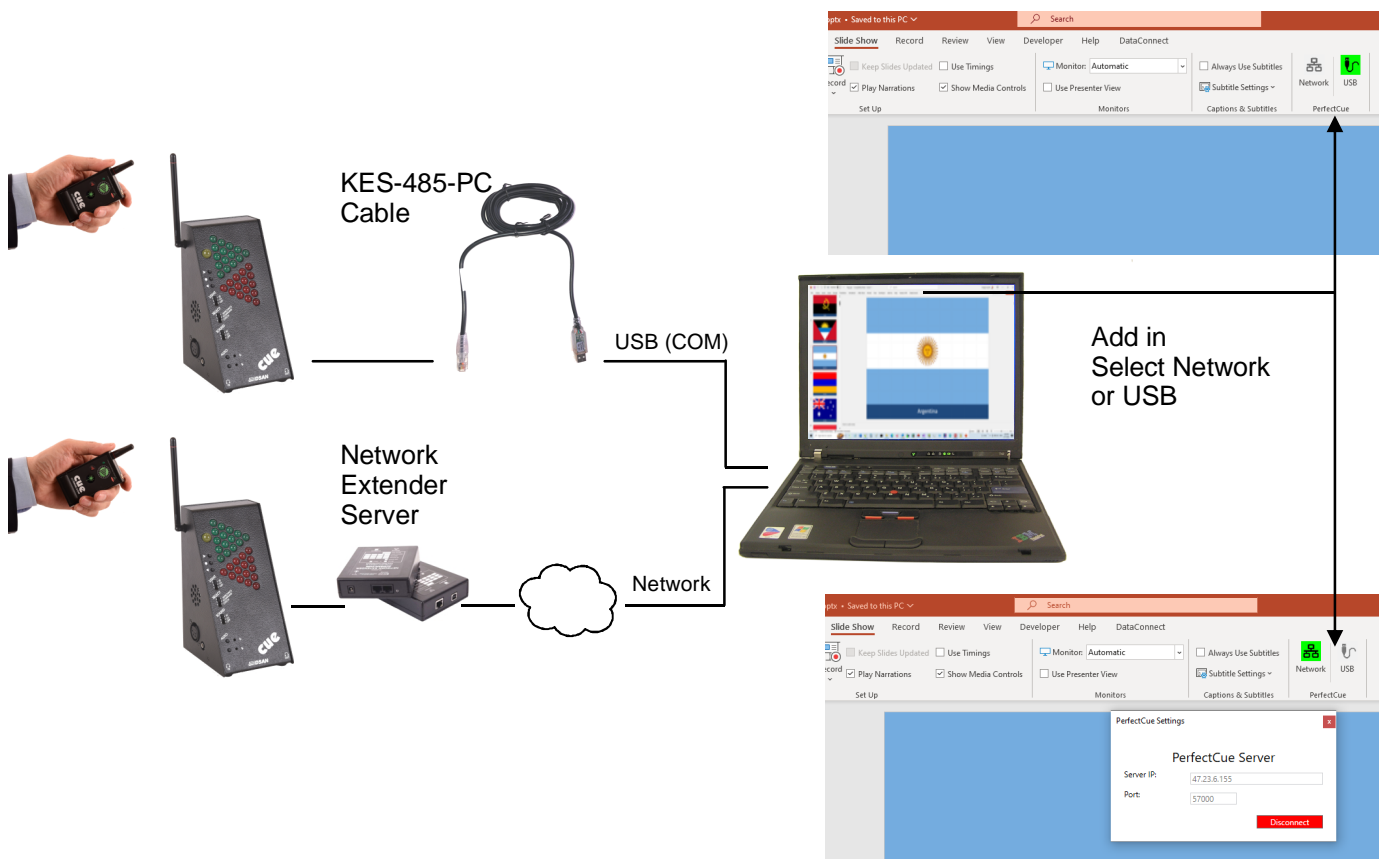


PerfectCue Remote

PowerPoint Addin to provide application-level show control via network or USB

Normally, PerfectCue is “seen” by a connected computer as a generic USB keyboard. No custom drivers are required. However, like all Windows programs, if PowerPoint loses focus (when you open an email client, or any other application) the keystroke commands sent by PerfectCue will not be recognized by PowerPoint. And remote navigation won’t work.

With PerfectCue Remote, PowerPoint will always respond to PerfectCue commands - either from a network source or via the special USB serial cable or the new VideoClock (VC-2000-2 dongle*) connected to the cue light - even if you are working on another application. No worries!



PerfectCue Remote uses a special USB-to-Serial Cable. See: www.dsan.com/product/usb-serial-cable-for-perfectcue/

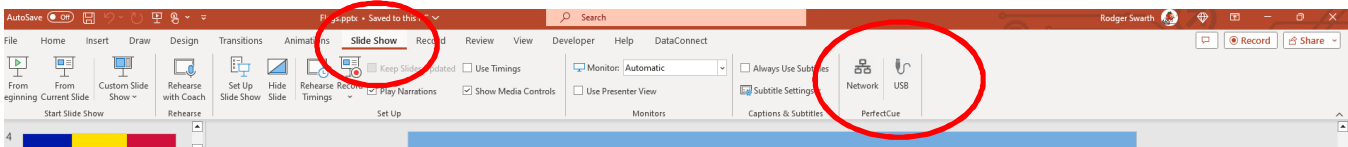
*If your computer has not previously used serial-to-USB devices, you may be prompted to load virtual COM port drivers from <https://ftdichip.com/drivers/vcp-drivers/>.

PerfectCue Remote Setup

1. Unzip the PerfectCueRemote archive. Click on the setup file.

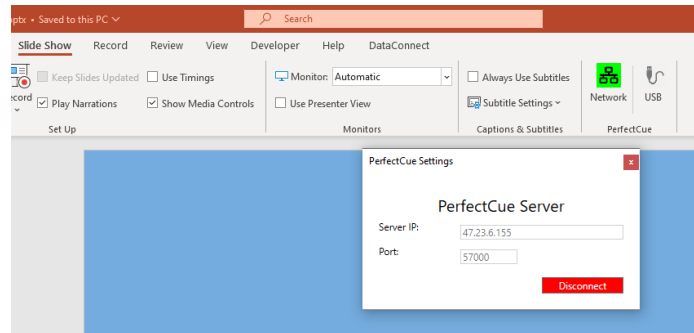
Name	Type
Application Files	File folder
PerfectCueRemote.vsto	VSTO Deployment Manifest
PerfectCueRemoteSetup.exe	Application

2. The Add-in will be installed and is available on the Slide Show menu.

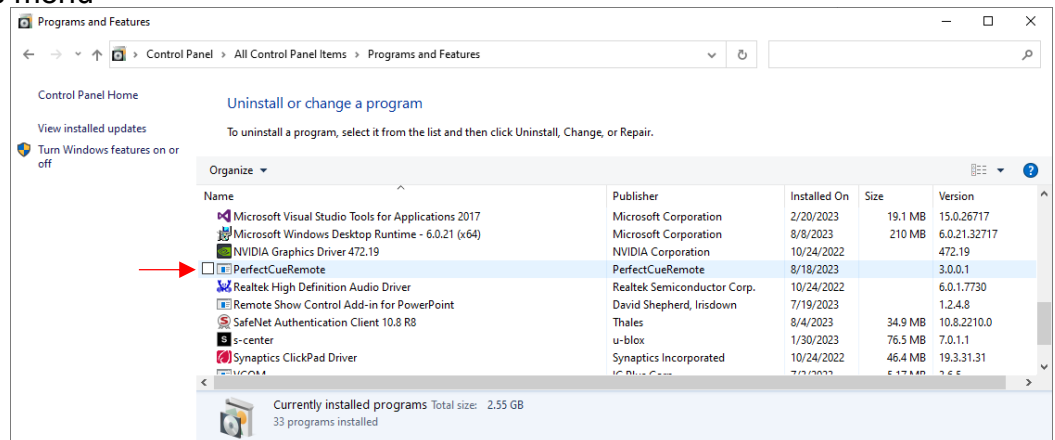


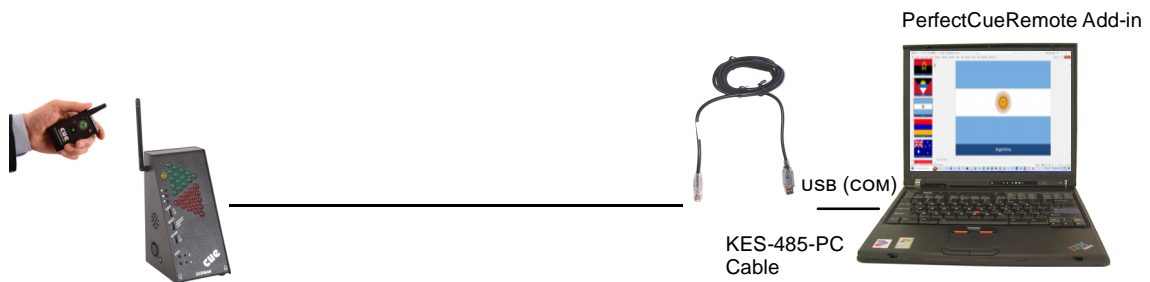
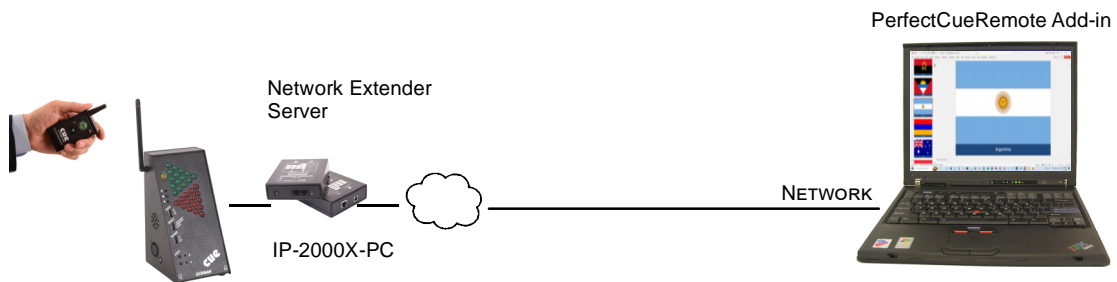
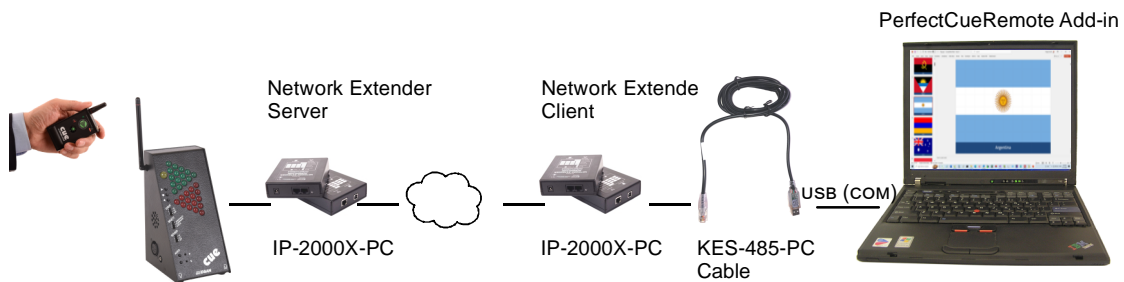
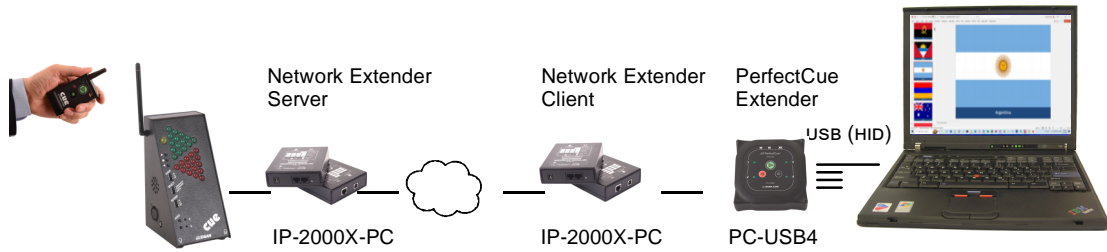
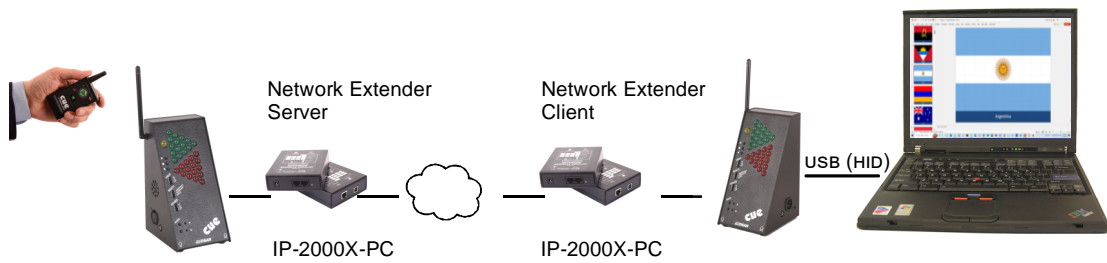
3. Select the source of the PerfectCue data: Special USB cable or from a Network.

To connect via a network, configure a Dsan Network Extender IP-2000X-PC as a server with a fixed IP address and port. Enter this information in the dialog box when Network is selected.



4. PerfectCue may be removed completely from your computer via the Control Panel | Programs and Features menu







www.cliqer.io